

M O R R I S C O U N T Y



M U N I C I P A L U T I L I T I E S A U T H O R I T Y

Information Packet for New Homeowner Customers of the MCMUA Transfer Stations

Revised March 1, 2024

Administrative Office Information

Morris County Municipal Utilities Authority

370 Richard Mine Road

Wharton, New Jersey 07885

Telephone: 973-829-8585

Fax: 973-285-8397

Office Hours: 8:00 a.m. - 3:30 p.m., Monday-Friday

Email: muinsurance@co.morris.nj.us

***** Should you need to come to the MCMUA main office, please call
973-829-8585 to make an appointment *****



Transfer Station Information

Mount Olive Transfer Station

168 Gold Mine Road, Flanders, NJ 07836

Hours of Operation:

7:30a.m. – 3:00p.m. Monday – Friday

7:30a.m. – 11:00a.m. Saturday

Parsippany-Troy Hills Transfer Station

1100 New Edwards Road, Parsippany, NJ 07054

Hours of Operation:

7:00a.m. – 3:00p.m. Monday – Friday

7:30a.m. – 11:00a.m. Saturday



In order to open an account with the MCMUA, you MUST have the following information prepared:

- Completed customer application
- Check made payable to the MCMUA for the minimum balance that applies to you plus anticipated tipping fees:

\$ 150.00 – Homeowners

\$ 750.00 – Homeowners with trailers

***This amount is your minimum balance. You MUST put extra money in your account to cover anticipated tipping fees.**

Transfer Station Usage by Town

Mount Olive Transfer Station

*Chester Boro.	*Mendham Boro	*Mine Hill Twsp.	*Rockaway Twsp.
*Chester Twsp	*Mendham Twsp	*Netcong Boro.	*Roxbury Twsp.
*Dover Town	*Mt. Arlington Boro.	*Randolph Twsp.	*Victory Garden Boro.
*Jefferson Twsp	*Mt. Olive Twsp.	*Rockaway Boro.	*Washington Twsp.
			*Wharton Boro.

Parsippany-Troy Hills Transfer Station

*Boonton Town	*Hanover Twsp.	*Morris Twsp.
*Boonton Twsp.	*Harding Twsp.	*Morristown
*Butler Boro.	*Kinnelon Boro.	*Mountain Lakes Boro.
*Chatham Boro.	*Lincoln Park Boro.	*Parsippany Twsp.
*Chatham Twsp.	*Long Hill Twsp.	*Pequannock Twsp.
*Denville Twsp.	*Madison Boro.	*Riverdale Boro.
*East Hanover Twsp.	*Montville Twsp.	
*Florham Park Boro.	*Morris Plains Boro.	

Please fill in the correct waste origin (town) on the Origin and Destination (O&D) Form.

The MCMUA is requesting that when you complete your O&D form that you take care in completing the section regarding the waste origin, which is the town where the garbage was generated. Many towns share similar names such as Boonton and Boonton Township; Chatham Borough and Chatham Township; Morristown, Morris Township and Morris Plains and; Rockaway Borough and Rockaway Township and the MCMUA requests that you accurately designate your load as being from the correct municipality. In addition, if your load is from multiple origins you should specify all the towns in the load by an estimated percentage as provided on the O&D form. Finally, please realize that many towns share zip codes so you cannot use the zip code of the generator to determine the waste origin. You must consider and know where the actual town boundaries are. As an example, many Rockaway Township, Wharton and Denville addresses use the 07801 Dover zip code.

Transfer Station Price List

Effective 1/1/2024

Type	Waste Description	Rate/Ton
10	Municipal Solid Waste	\$ 111.25
13	Bulky Waste	\$ 111.25
13C	Construction & Demolition Waste	\$ 111.25
23	Vegetative Waste	\$ 111.25
25	Food & Animal Processing Waste	\$ 101.99
27*	Dry Industrial (Non-Hazardous) Waste	\$ 111.25
16	Tire Recycling Per Ton	\$ 500.00

***Please Note:**

*All Type 27 waste must first be approved by the Morris County MUA prior to delivery.

Prices include the \$3.00/ton recycling tax instituted by the State as of 04-01-2008.



2024 Transfer Station & Office Holiday Schedule

Holiday	Transfer Stations	MCMUA Offices
Monday, January 1, 2024 – New Year’s Day (Observed)	Closed	Closed
Monday, January 15, 2024 – Martin Luther King Jr. Day	Open	Closed
Monday, February 12, 2024 – Lincoln’s Birthday (Observed)	Open	Closed
Monday, February 19, 2024 – Presidents’ Day	Open	Closed
Friday, March 29, 2024 – Good Friday	Open	Closed
Monday, May 27, 2024 – Memorial Day	Closed	Closed
Friday, June 21, 2024 – Juneteenth Day (Observed)	Open	Closed
Thursday, July 4, 2024 – Independence Day	Closed	Closed
Monday, September 2, 2024 – Labor Day	Closed	Closed
Monday, October 14, 2024 – Columbus Day	Open	Closed
Tuesday November 5, 2024 – Election Day	Open	Closed
Monday, November 11, 2024 – Veteran’s Day (Observed)	Open	Closed
Thursday, November 28, 2024 – Thanksgiving Day	Closed	Closed
Friday, November 29, 2024 – Day After Thanksgiving	Open	Closed
Saturday, December 24, 2023 – Christmas Eve	Open	Closed
Wednesday, December 25, 2024 – Christmas Day (Observed)	Closed	Closed
Wednesday, January 1, 2025 – New Year’s Day (Observed)	Closed	Closed

Bold font indicates the transfer stations and offices will be closed.

Customer Application

Account Name: _____

Address: _____

City: _____ State: _____ Zip: _____

Phone: _____ Fax: _____

Cell Number: _____

Contact Name: _____

Email Address: _____

Fill out top portion of this Customer Application and return it with a check that covers your required minimum balance **PLUS** anticipated tipping fees.

*Morris County MUA
370 Richard Mine Road, Wharton, NJ 07885*

***** Please call 973-829-8585 to make an appointment should you need to come to the main MCMUA office*****

Upon completion of this application, please submit in the following manner:

1. Scan and email to muainsurance@co.morris.nj.us or fax it to (973) 285-8397
2. If you prefer to drop the application off at our administration office, please call (973) 829-8585 when you arrive outside our office, and someone will meet you outside.

-----*CUT HERE*-----

MCMUA Transfer Stations - For Your Information

- Please read and sign the Safety and Operational Rules (attached).
- If the account balance falls below the designated account minimum balance, you will be denied access to the transfer stations.
- Transfer stations cannot accept hazardous wastes such as pesticides, E-waste, herbicides, oil-based paints, stains and varnishes, automotive fluids, batteries, tar, propane cylinders, etc. For your convenience, the MCMUA does operate a comprehensive household hazardous waste program. For more information, please see our website at www.MCMUA.com.
- All open top trailers and pick-ups are required to be tarped and not be removed until approaching the tipping area.
- Mandated recyclable materials must be source separated by the generator at their site and notices of violation may be issued against you if you tip mandated recyclable materials at the transfer stations. See the Mandated Recyclable Materials list for more information.
- Hardhat, high visibility clothes/reflective safety vests, safety shoes, and eye protection are to be worn when outside the vehicle.

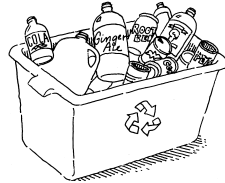
Mandated Recyclable Materials

Morris County, New Jersey

The law requires all waste generators in Morris County to keep the materials that are listed below separate from garbage to be recycled (“source separation”). These materials must remain separated from garbage until they reach an appropriate recycling facility. Everyone is a waste generator and must keep the recyclable materials listed below separate from garbage whether at home, at work or at play. If a location does not have separate receptacles for these mandated recyclable materials, speak to the management and tell them recycling is the law. Waste generators include, but are not limited to, residents, (single-family homes, multifamily complexes, hotels), office buildings, businesses, schools, restaurants, shopping centers, medical facilities, government buildings, recreational areas, and construction sites.

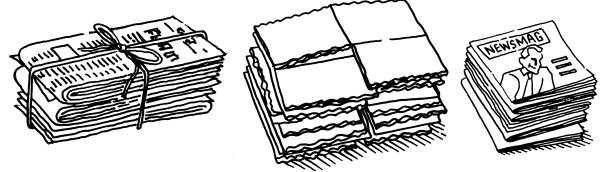
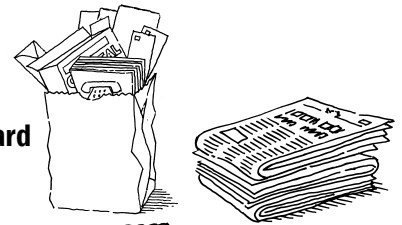
Bottles and Cans

- Aluminum Cans
- Glass Bottles and Jars
- Plastic Bottles (coded 1 and 2)
- Steel (Tin) Cans



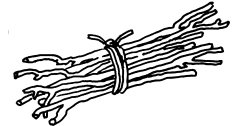
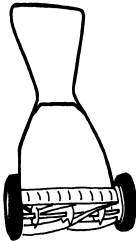
Paper

- Newspaper
- Corrugated Cardboard
- Mixed Paper



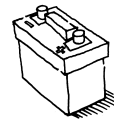
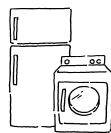
Mandated Organics

- Leaves
- Grass Clippings
- Brush
- Natural Wood Waste - Logs, Stumps, Branches and Other Wood Tree Parts.



Additional Mandated Recyclables

- Used Motor Oil*
- Whole Tires**
- Metal Appliances
- Hazardous Dry Cell Batteries*
- Lead-Acid Batteries*
- Oil-Contaminated Soil
- Television, Computers, Laptops, Monitors



*For information on proper disposal of these items and other household hazardous waste, contact the MCMUA

**Tires are allowed to be recycled and/or incinerated for energy recovery.

For further information on recycling or other waste disposal questions, visit www.MCMUA.com or call your town’s recycling coordinator or the MCMUA at (973) 285-8394.

Definitions of Materials Mandated to be Source Separated and Recycled in Morris County, New Jersey

- **Aluminum Cans** - Cans made from aluminum that was manufactured to hold a serving of a beverage. Specifically omitted from this definition are aluminum foil and aluminum pie plates.
- **Glass Bottles and Jars** - Bottles and jars made from glass including clear, brown and green glass. A bottle is defined as a receptacle having a narrow neck and a mouth that can be corked or capped. A jar is defined as a wide-mouthed container that can be capped. Caps and lids not included. Specifically omitted from this definition are drinking glasses, windows, mirrors, light bulbs, and anything made of Pyrex® or ceramic.
- **Plastic Bottles (coded 1 and 2)** - Plastic bottles coded to indicate that they are comprised of the specific types of plastic compounds (polymers) known as polyethylene terephthalate (PETE) or high density polyethylene (HDPE). See symbols to the left. A bottle is defined as a receptacle having a narrow neck and a mouth that can be corked or capped. Caps and lids not included. Any item made of plastic that is not a bottle, and any plastic bottle without one of the symbols shown to the left is specifically omitted from this definition. Empty bottles which contained hazardous materials, such as motor oil, antifreeze, etc. should not be recycled.

The image shows two recycling symbols side-by-side. The first is a triangle with the number '1' inside, labeled 'PETE' below it. The second is a triangle with the number '2' inside, labeled 'HDPE' below it.
- **Steel (Tin) Cans** - An air-tight container for the distribution or storage of goods, composed of thin, usually ferrous, metal. Examples are soup cans and tuna fish cans.
- **Newspaper** - A publication containing news, information and advertising, usually printed on low-cost paper called newsprint. Newspaper may include glossy inserts which come with the paper, dependent upon the market conditions at the time.
- **Corrugated Cardboard** - Shipping containers made with kraft paper linerboard and corrugated medium.
- **Mixed Paper** - Various categories of recyclable paper including, but not limited to white and colored paper used in printers, photocopiers and fax machines, white and colored ledger paper, carbonless copy paper, construction paper, undeliverable mail, mailed promotional letters/advertisements/circulars, magazines, catalogues, envelopes, soft cover books.
- **Leaves** - Vegetative material, typically generated in the autumn when they fall from trees and then are raked from residents' and/or commercial lawns.
- **Grass Clippings** - Vegetative material generated when grass (lawns) is cut.
- **Brush** - Branches, woody plants and other similar vegetative material. Leaves and grass do not constitute brush.
- **Natural Wood Waste** - Logs, stumps, branches and other wood tree parts. Dimensional lumber is omitted from inclusion in this definition.
- **Oil-Contaminated Soil** - Non-hazardous soil that contains petroleum hydrocarbons (gasoline, diesel, kerosene, jet fuel, #4 & #6 heating oils and certain other refinery products including coal tar). This type of soil shall be determined to be non-hazardous in accordance with the standards set forth in N.J.A.C. 7:26.
- **Used Motor Oil** - Motor oil from motor vehicles, lawn mowers, boats, etc., which has served its intended useful purpose.
- **Lead-Acid Batteries** - Storage batteries in which the electrodes are grids of lead containing lead oxides that change in composition during charging and discharging, and the electrolyte is dilute sulfuric acid. These include starting batteries such as car batteries that deliver a short burst of high power to start the engine. In addition, they may include deep cell batteries found on boats or campers used to power accessories like trolling motors, winches or lights.
- **Hazardous Dry Cell Batteries** - Rechargeable batteries, such as nickel-cadmium, nickel-iron, nickel metal hydride, lithium ion, small sealed lead acid, etc. These are often used as substitutes for non-rechargeable batteries in standard sizes such as AAA, AA, C, D and 9V. Rechargeable batteries are commonly found in cordless tools, cellular and cordless phones, laptop computers, cameras, remote controls, toys, etc. Also included in this definition are non-rechargeable batteries that are hazardous as defined by the Resource Conservation Recovery Act ("RCRA"), regardless of the RCRA exclusion of household waste from the definition of hazardous waste pursuant to 40 C.F.R. 261.4(b). Non-rechargeable, hazardous batteries include older alkaline and carbon zinc batteries as well as silver oxide, mercury and magnesium button-type batteries, etc. It should be noted that domestically manufactured alkaline and carbon zinc non-rechargeable batteries made after circa 1994 eliminated mercury content to the point that they should not be considered RCRA hazardous and therefore are not included in this material category.
- **Metal Appliances** - Appliances composed predominantly of metal, and may include stoves, washing machines and dryers, for example, if the appliance is predominantly metal. Also included are air conditioners, refrigerators and dehumidifiers if they are predominantly metal. If these appliances on the latter list contain refrigerants that are prohibited by the Clean Air Act from being knowingly vented, the refrigerant must be recovered accordingly.
- **Whole Tires*** - Tires that are whole, not chipped into small pieces. *Tires are allowed to be recycled and/or incinerated for energy recovery.
- **Televisions, Computers, Laptops and Monitors** - As of 2011, these listed electronic items are banned from the garbage in accordance with New Jersey's Electronic Waste Management Act and must be recycled at designated programs.